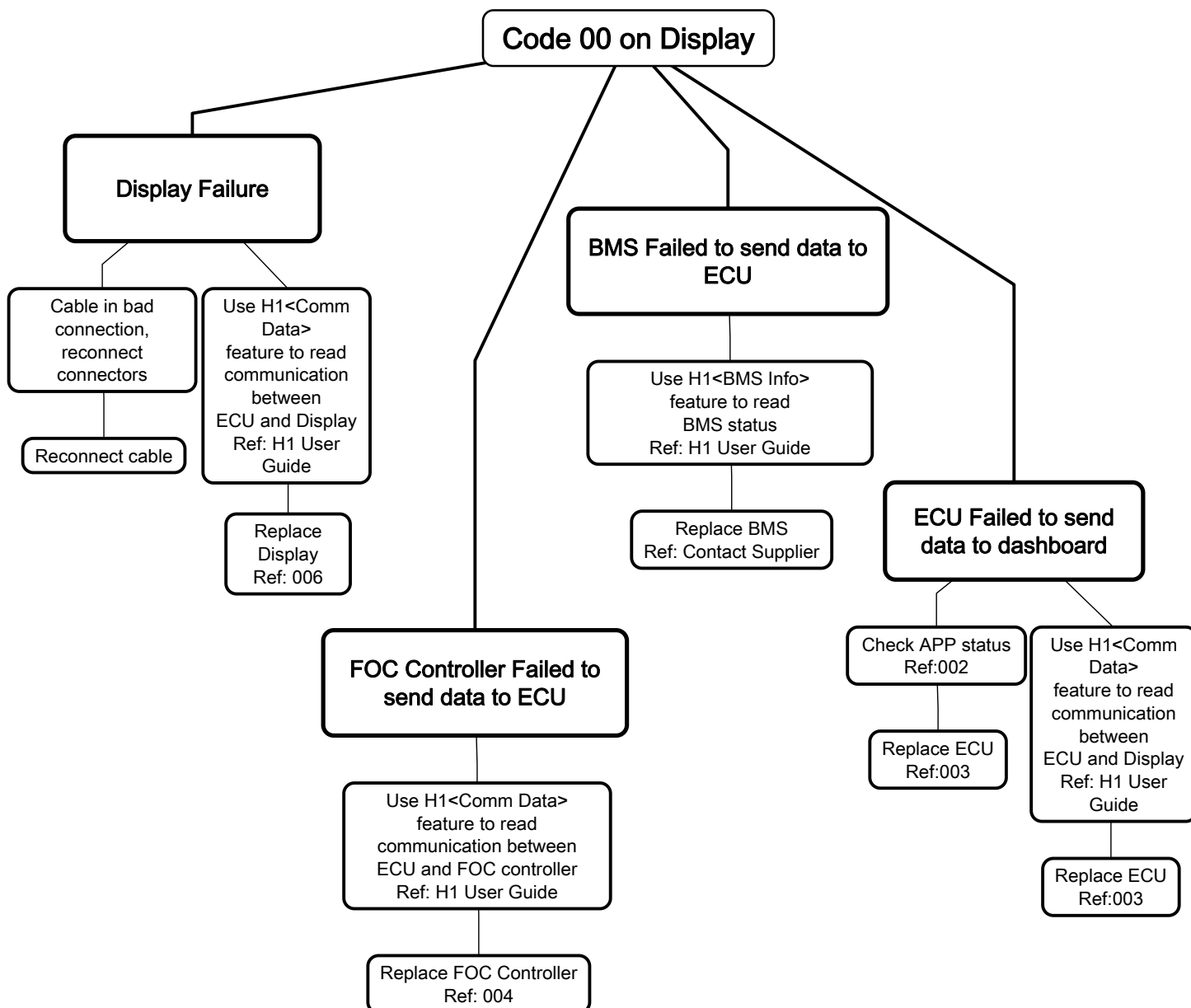


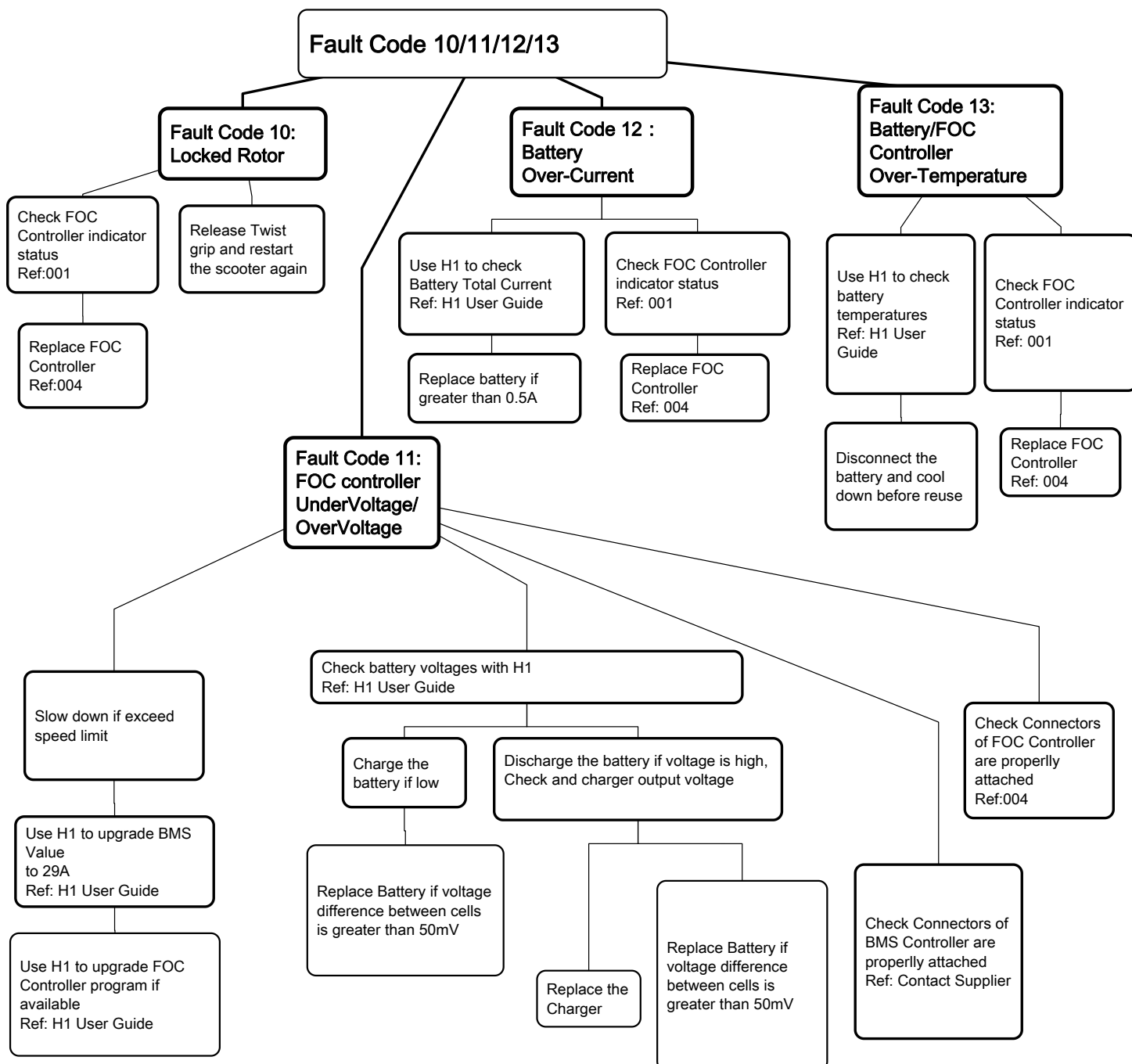
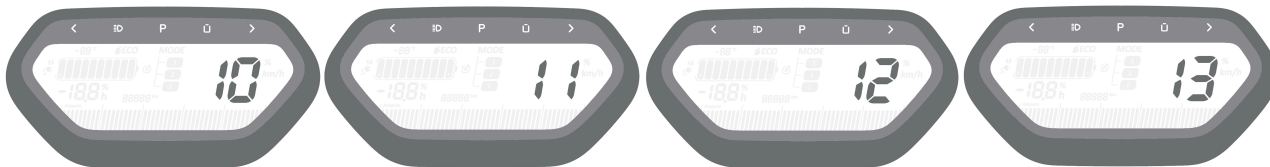


## Diagnostic Code - 00 on display



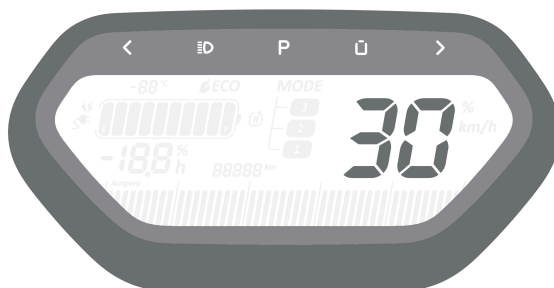


## Diagnostic Code - 10/11/12/13 on display





## Diagnostic Code - 30 on display



### Fault Code 30: Battery Over-Charge Protection

#### Charger Failure

Try charging the battery with another Charger

Replace Charger

#### Battery Overcharged

Use H1 to check battery pack Total Voltage  
Ref: H1 User Guide

Discharge the battery if overcharged  
Note: BMS may stop the charging process to protect battery cells, in cases if the battery can't be charged fully , please charge the battery again.

Use H1 to check single cell voltages  
Ref: H1 User Guide

Replace the battery pack if difference in single cell voltages is greater than 50mV



## Diagnostic Code - 31 on display



### Fault Code 31 Charging Over-Current Protection

Charger Failure

Try charging the battery with another  
Charger

Replace Charger

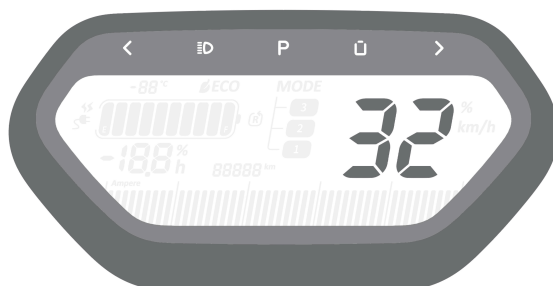
Slow down if exceed speed limit

Use H1 to upgrade BMS Value to 29A  
Ref: H1 User Guide

Use H1 to upgrade FOC Controller program if  
available  
Ref: H1 User Guide



## Diagnostic Code - 32 on display



### Fault Code 32 Charging Prohibited at Low Temperature

**Battery temperature sensors failure**

Use H1 to check Temperature sensors  
Ref: H1 User Guide

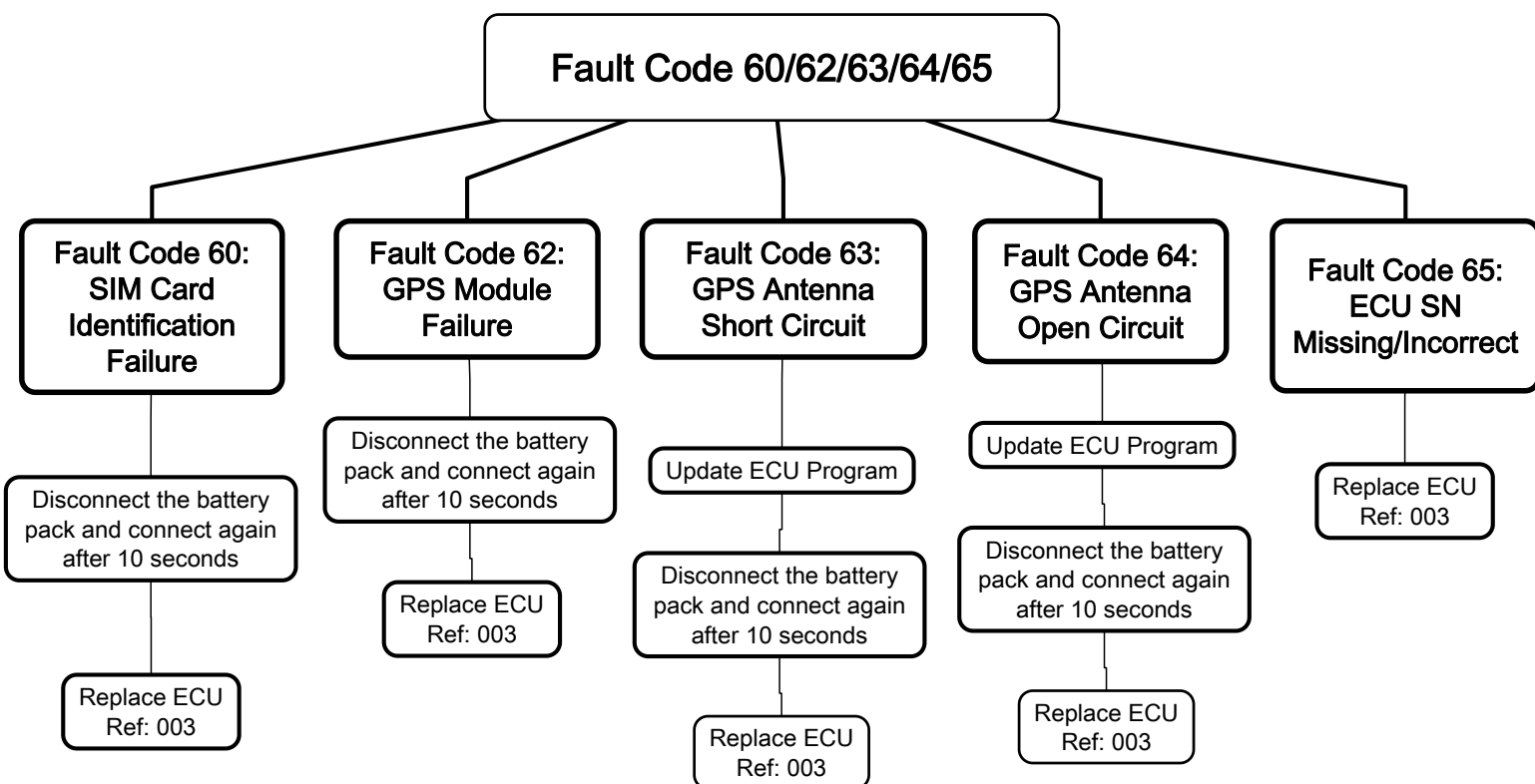
Replace the BMS if temperature is imbalanced  
Ref: Contact Supplier

**Battery Temperature LOW ( below-20°)**

Take the battery pack indoor until back to normal operating temperature

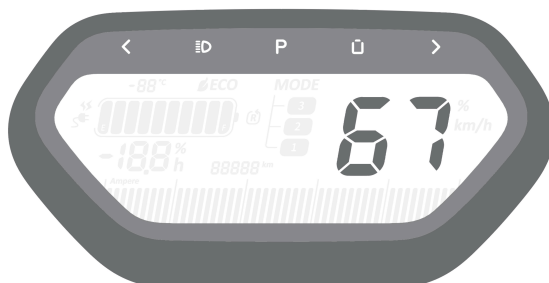


## Diagnostic Code - 60/62/63/64/65 on display





## Diagnostic Code - 67 on display



### Fault Code 67 Data Service(SIM Card)Unpaid/Inactivated/Low Signal Strength

**Renew Top-up App Data Service**

Log into App and follow instructions

**SIM Card Unpaid/Inactivated**

Activate the SIM card  
Ref: please follow APP instruction

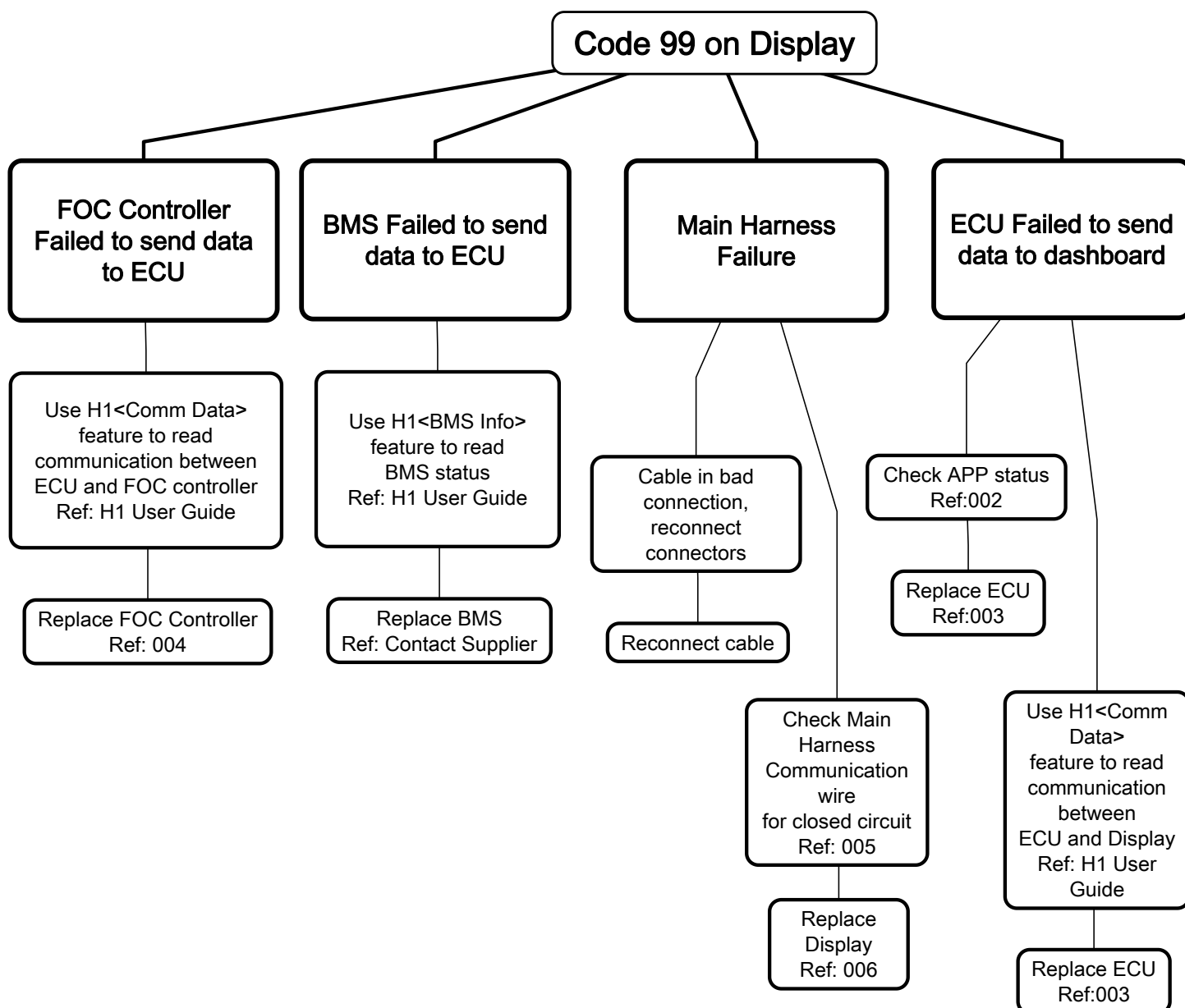
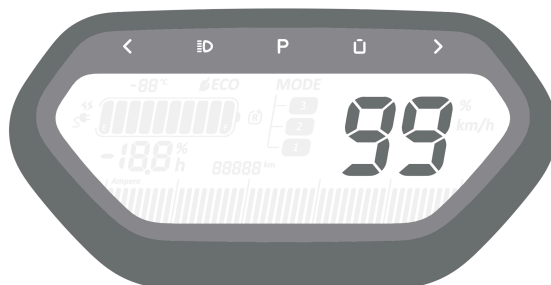
Update ECU program to Data  
Deactivated program to Cancel 67  
Warning Code  
Ref: H1 User Guide

**Use H1 to check Signal Strength  
Ref: H1 User Guide**

Move the scooter to open ground and wait for 10 minutes for better signal reception



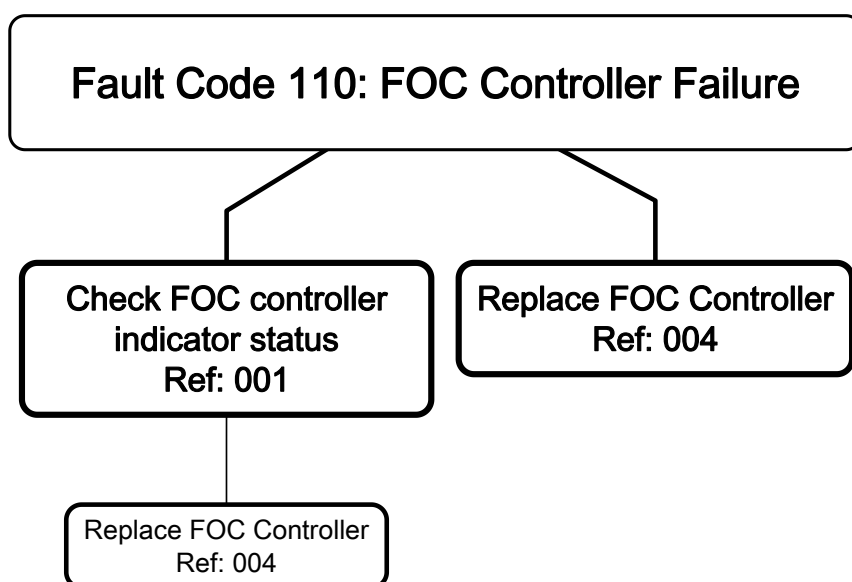
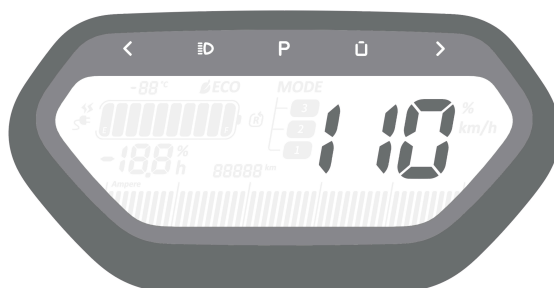
## Diagnostic Code - 99 on display





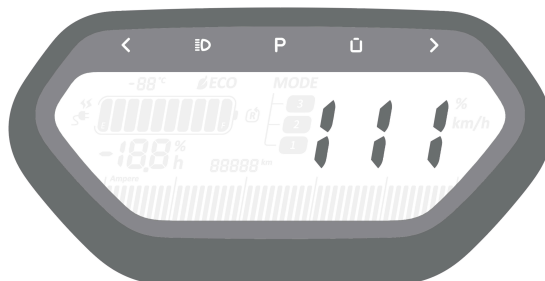


## Diagnostic Code - 110 on display

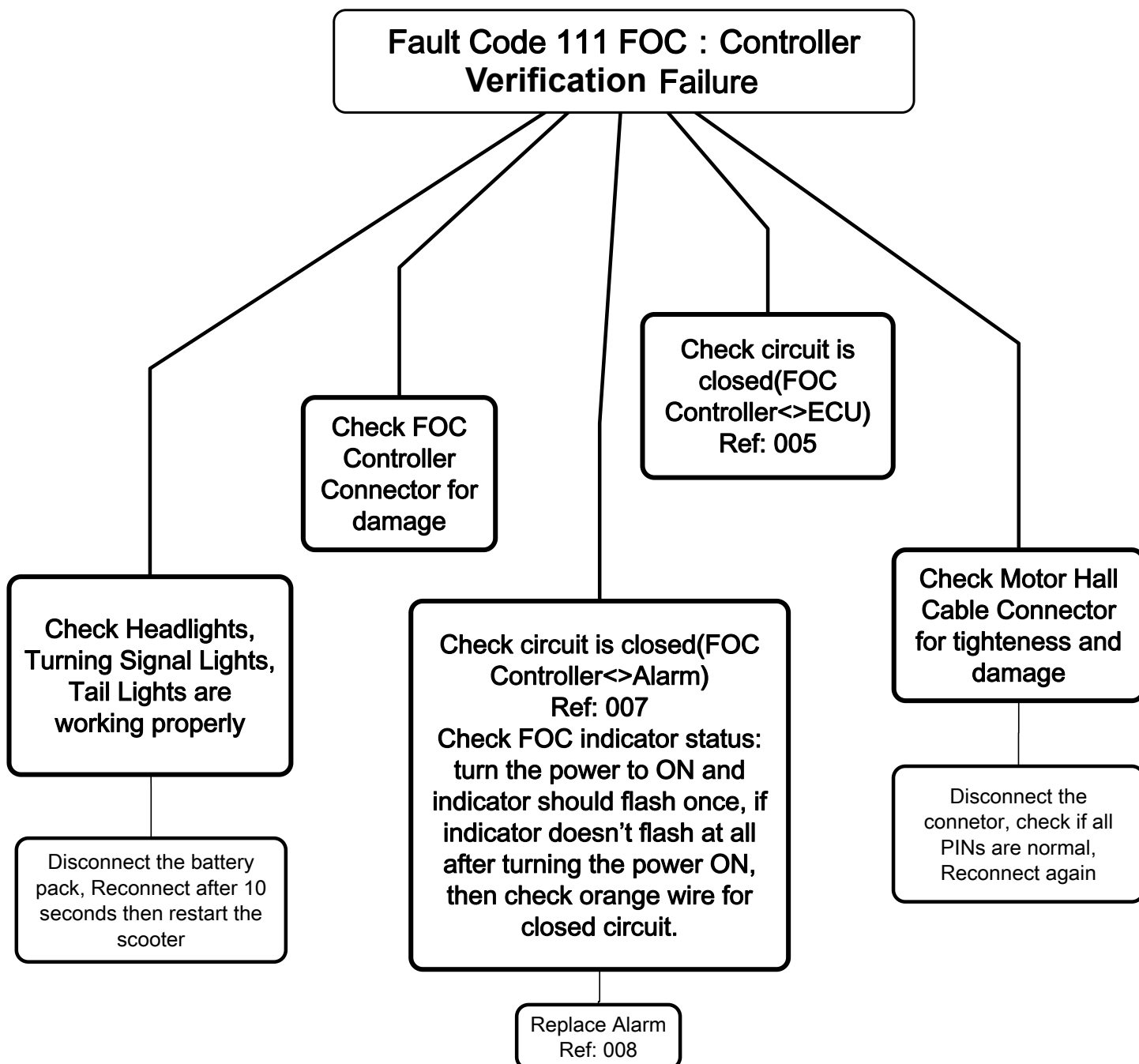




## Diagnostic Code - 111 on display



### Fault Code 111 FOC : Controller Verification Failure





## Diagnostic Code - 120 on display



### Fault Code 120 Motor Failure

Check FOC  
Controller  
Indicator status  
Ref: 001

Flashing Frequency: 5times  
Motor Hall sensor failed

Replace Motor  
Ref: 009

Flashing Frequency: 7times  
One or more phase cables  
missing

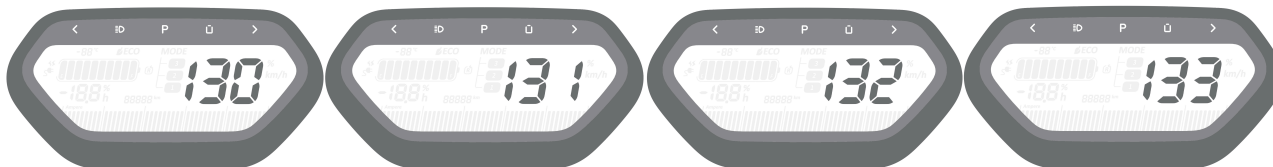
Replace Motor  
Ref: 009

Motor Hall cable in bad  
connection with FOC controller  
connector ( please check both  
connectors between FOC  
Controller and Motor)  
Please pay attention to vehicles  
produced before 12.2016 )

Disconnect the Motorl Hall sensor  
cable and reconnect again



## Diagnostic Code - 130/131/132/133 on display



### Fault Code 130/131/132/133

**Fault Code 130 : Battery Over Discharged Warning**

Battery LOW, Check battery voltages by H1 and charge the battery  
Ref: H1 User Guide

Replace the battery if voltage differences between cell is greater than 0.05V

**Fault Code 131: Over-Current Discharging Warning**

Check the Current of battery with H1  
Ref: H1 User Guide

**Fault Code 132 : Battery Over-temperature (55°+) Warning**

Disconnect the battery pack and check the battery temperature with H1, cool down before using  
Ref: H1 User Guide

Replace the BMS if temperature is imbalanced  
Ref: Contact Supplier

**Fault Code 133: Battery Charge/Discharge prohibited -20° environments**

Disconnect the battery pack and check the battery temperature with H1  
Ref: H1 User Guide

Take the battery back indoor, Charge/Discharge will recover at -15°

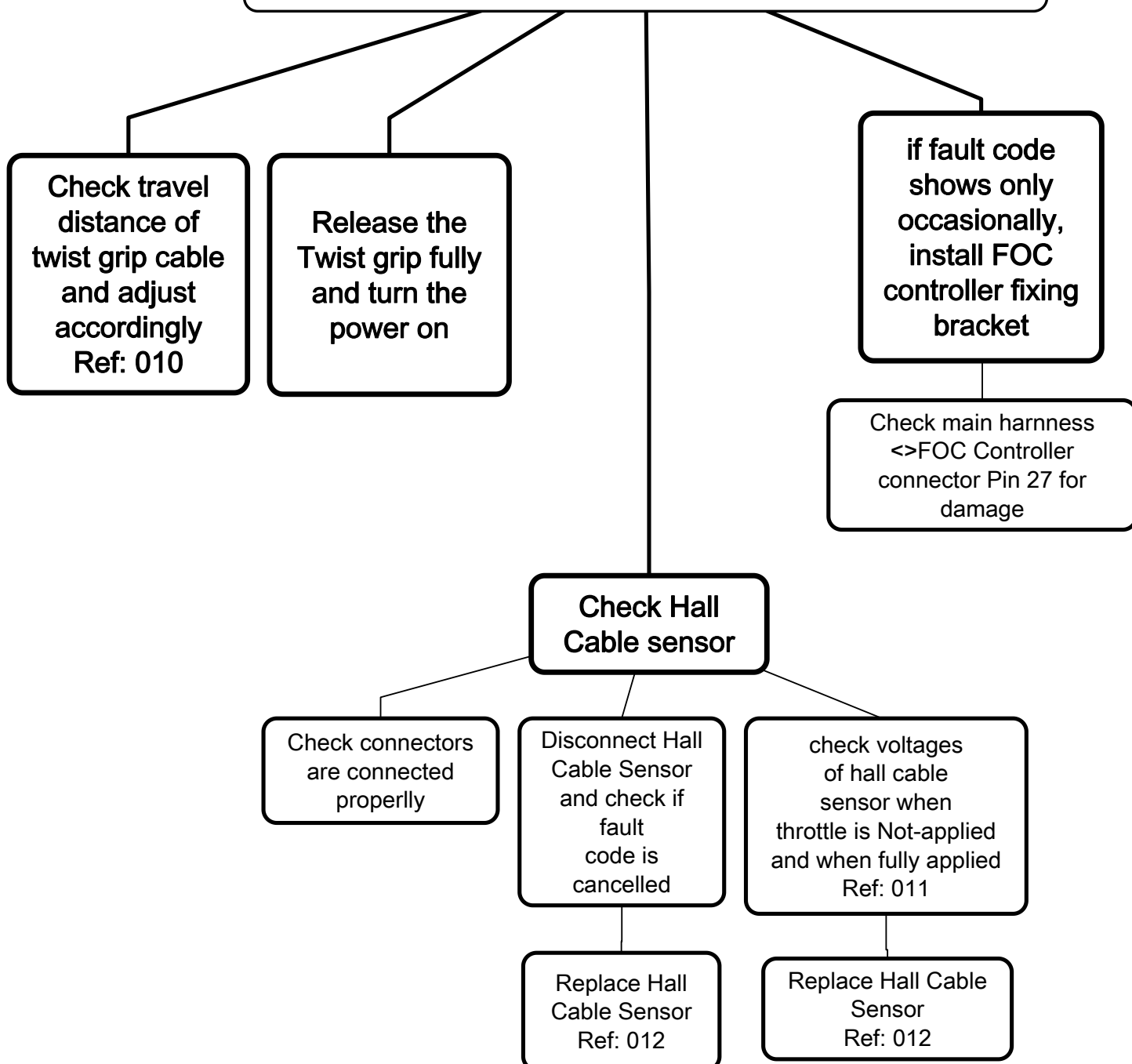
Replace the BMS if temperature is imbalanced  
Ref: Contact Supplier



## Diagnostic Code - 140 on display



### Fault Code 140: Hall Cable Sensor Failure





## Diagnostic Code - 161 on display

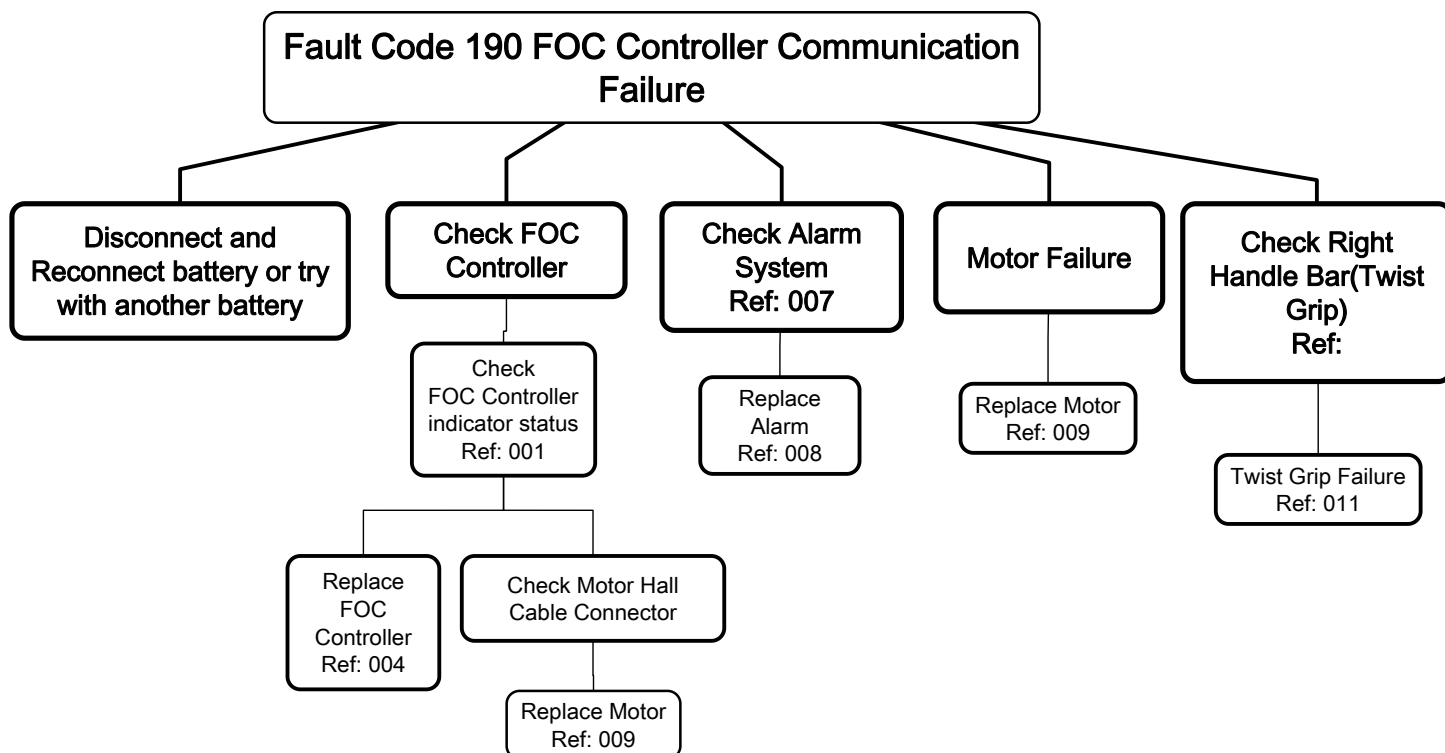


**Fault Code 161: Scooter has been locked by remote command**

**Contact Supplier to unlock**



## Diagnostic Code - 190 on display





## Diagnostic Code - 191 on display

